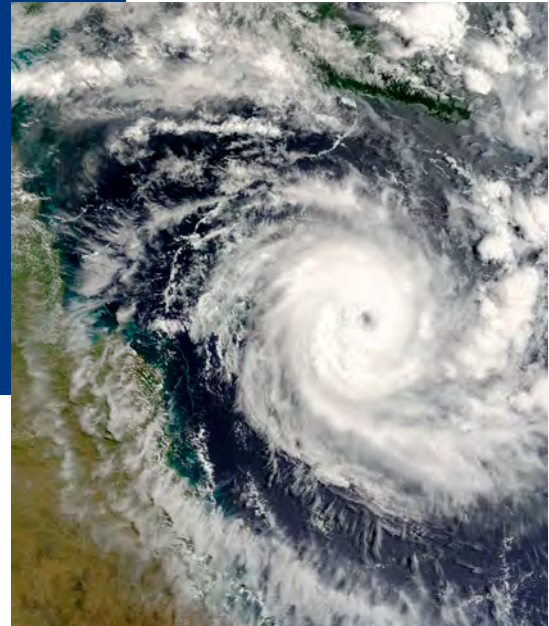


PREPARING FOR A CYCLONE



Every year, Australia's high-risk cyclone areas can expect an average of two to three cyclones to cross the coast during the November-April cyclone season. Combining strong winds, heavy rain and flying debris, cyclones can be devastating. However, you can take action before, during and after a cyclone to reduce the impact on your home.

Before a cyclone



Secure the roof, walls and eaves of your house. Trim tree branches around your home and other structures. Clear away or secure items outside that could be blown about by the wind or carried away in surging water.



Familiarise yourself and your family with your cyclone emergency plan. Put together an "Emergency Pack" including tinned food, water, first-aid kit, warm clothing, and a torch. Be prepared for power, water and communication outages.



Move all vehicles under cover if possible. Secure all shutters, windows, doors, and any items left outdoors. Turn off gas and power supplies.



Make sure you know what your insurance covers and that the sum for which you are insured covers the replacement value of what you would like to insure¹.



During a cyclone



Be aware of where the cyclone is expected to be heading. Use a battery-powered radio to monitor your local radio station for updates on the cyclone, weather, power supply, emergency warnings and evacuation alerts. Contact **000** or your local SES in any emergency.



If it is safe to do so, remain in your home if it meets appropriate building regulations and is not in a storm surge/flood-prone area. If your house does not meet appropriate regulations, consider staying with someone who does have a house that meets the regulations.

After a cyclone



Stay away from fallen power lines and anything that may be touching them. Also avoid damaged buildings and trees, as well as creeks and rivers that are flooded.



Continue to monitor your local radio station for updates on the weather, power supply, emergency warnings and evacuation alerts. Don't go outside until authorities advise that it is safe.



Once the danger has passed, take photos of damaged or destroyed items before disposing of them to assist in any insurance claims. Make your claim online at allianzclaims.com.au or call **13 10 13**.

We're here to help

Severe weather events take an emotional toll on us. If you are suffering, please visit allianz.com.au/support to find the right support measure for you.

References:

1. Please note a 72 hour exclusion period may apply for loss of or damage caused by cyclone, flood, grassfires and bushfires after you first take out or increase the cover under the policy. Please refer to your PDS for full details, terms, and conditions

Disclaimer:

Please note the information in this article is general in nature and does not take into account your objectives, financial situation or needs. You should consider obtaining independent advice before making any decisions based on this article.

This article has been prepared by Allianz Australia Insurance Limited ABN 15 000 122 850 AFSL 234708 ("Allianz"). Information contained in this article is accurate as at 06 11 2020 and may be subject to change. In some cases information has been provided to us by third parties and while that information is believed to be accurate and reliable, its accuracy is not guaranteed in any way. Any opinions expressed constitute our views at the time of issue and are subject to change. Neither Allianz, nor its employees or directors give any warranty of accuracy or accept responsibility for any loss or liability incurred by you in respect of any error, omission or misrepresentation in this article.

(Partner Name and ABN and AFSL inserted here) arranges this insurance as agent for the insurer Allianz Australia Insurance Limited ABN 15 000 122 850 AFSL No 234708. We do not provide any advice based on any consideration of your objectives, financial situation or needs. Terms, conditions, limits and exclusions apply. Before making a decision, please consider the relevant Product Disclosure Statement available from < Partner to insert link>. If you purchase this insurance, we will receive a commission that is a percentage of the premium. <Partner to insert any other remuneration> Ask us for more details before we provide you with services.

Allianz Australia Insurance Limited

ABN 15 000 122 850

AFSL 234708

2 Market Street, Sydney NSW 2000

